

REFERENCES

- Abidin. (2014). The Competitive Strategy and Performance of Quantity Surveying Firms in Malaysia. *Journal of Construction in Developing Countries*, 19(2):15-32.
- Al-Ebel, B. S.-M. (2020). Religiosity, Accounting Expertise, and Audit Report Lag: Empirical Evidence from the Individual Level. *Cogent Business & Management*, 7(1), 76-85.
- Al-Matari, E. M.-S. (2013). The Effect of the Internal Audit and Firm Performance: A Proposed Research Framework. *International Review of Management and Marketing*, 6(4), 34-41.
- Alqatamin. (2018). The Audit Committee Effectiveness and Company Performance: Evidence from Jordan. *Accounting and Finance Research*, 7(2):1-48.
- Arayssi, M. D. (2016). Women on Boards, Sustainability Reporting and Firm Performance. *Sustainability Accounting, Management and Policy Journal*, 7(3), 376–401.
- Aryestantya, & Johan. (2020). Corporate Risk-Taking Behaviour: Corporate Governance Perspective. *Journal of Contemporary Accounting*, 2(1), 1-12.
- Bacha. (2020). CSR Performances and the Cost of Debt: Does Audit Quality Matter?. *Corporate governance: The International Journal of Business in Society*, 21(1), 137-158.

- Bae Choi, B. L. (2013). An Analysis of Australian Company Carbon Emission Disclosures. *Pacific Accounting Review*, 25(1), 58–79.
- Bakers. (2011). Factors Influencing Dividend Policy Decisions of Nasdaq Firms. The Financial Review. *Journal of Business and Economics*, 38(2), 17-27.
- Barnett, & Salomon. (2006). Beyond Dichotomy: The Curvilinear Relationship between Social Responsibility and Financial Performance. *Strategic Management Journal*, 27(11):1101-1122.
- Basyaib, & Fachmi. (2007). *Keuangan Perusahaan Pemodelan Menggunakan Microsoft Excel*. Jakarta: Kencana Prenada Media Group.
- Beasley. (2005). Enterprise Risk Management: An Empirical Analysis of Factors Associated With the Extent of Implementation. *Journal of Accounting and Public Policy*, 24(6):521-531.
- Brigham, & Houston. (2012). *Dasar-dasar Manajemen Keuangan. Buku 1*. Jakarta: Salemba Empat.
- Buallay, & Al-Ajmi. (2019). The Role of Audit Committee Attributes in Corporate Sustainability Reporting: Evidence from Banks in the Gulf Cooperation Council. *Journal of Applied Accounting Research*, 21(2), 2879-2892.
- Bungin, & Burhan. (2015). *Analisis Data Penelitian Kuantitatif*. Jakarta: PT RajaGrafindo Persada.
- Caneghem, V. (2004). The Impact of Audit Quality on Earnings Rounding-Up Behaviour. *European Accounting Review* 13(4):771-786.

- Chanawongs, & Poonpool. (2011). The Effect of Auditor Professional on Audit Quality: An Empirical Study of Certified Public Accountants (Cpas) In Thailand. *International Journal of Business Research*, 11(3), 113-127.
- Chen. (2015). The Relationship Between Disclosures of Corporate Social Performance and Financial Performance: Evidences from GRI reports in manufacturing industry. *International Journal of Production Economics*, 170(2), 445 - 456.
- Chi, & Huang. (2005). Discretionary Accruals, Audit-Firm Tenure and Audit-Partner Tenure: Empirical Evidence from Taiwan. *Journal of Contemporary Accounting and Economics*, 1(1):65-92.
- Clarkson. (2013). The Relevance of Environmental Disclosures: Are Such Disclosures Incrementally Informative? *Journal of Accounting and Public Policy*, 32(5):410–431.
- Connely. (2011). Signaling Theory: A Review and Assessment. *Journal of Management*, 37(1):39-67.
- Dalton. (1999). Number of Directors and Financial Performance: A Meta Analysis . *Academy of Management Journal*, 42(6), 674-686.
- DeAngelo. (1981). Auditor Size and Audit Quality. *Journal of Accounting and Economics*, 3(3), 183-199.
- DeFond, M., & Zhang. (2014). A Review of Archival Auditing Research. *Journal of Accounting and Economics*, 58(2-3), 275-326.

- Dellaportas. (2012). Governance and Accountability in Australian Charitable Organisations: Perceptions from CFOs. *International Journal of Accounting and Information Management*, 20(3), 238-254.
- Dembo. (2017). The Impact of Sustainability Practices on the Financial Performance: Evidence from Listed Oil and Gas Companies in Nigeria. *Dimensional Corporate Governance*, 17(3), 215-233.
- Desender, & Lafuente. (2009). The Relationship Between Enterprise Risk Management and External Audit Fees: Are They Complements or Substitutes? *Corporate Governance & Accounting eJournal*, 11(2), 5-27.
- Dybvig, & Warachka. (2015). Tobin's q Does Not Measure Firm Performance: Theory, Empirics, and Alternatives, March. *International Journal of Economics and Business*, 9(1), 425-441.
- Ekasari, H. D. (2018). From Theory to Practice of Signaling Theory: Sustainability Reporting Strategy Impact on Stock Price Crash Risk with Sustainability Reporting Quality as Mediating Variable. *KnE Social Sciences. The 2018 International Conference of Organizational Innovation*, K.S Science: 2018, 647–658.
- Erasmus, & Coetzee. (2018). Drivers of Stakeholders' View of Internal Audit Effectiveness: Management Versus Audit Committee. *Managerial Auditing Journal*, 33(1), 90-114.
- Erkens. (2015). Non-financial Information: State of the Art and Research Perspectives Based on a Bibliometric Study. *Comptabilite Controle Audit*, 15(2), 165-192.

- Florio, & Leoni. (2017). Enterprise Risk Management and Firm Performance: The Italian Case. *The British Accounting Review*, 49(1),56-74.
- Ghozali, I. (2016). *Aplikasi Analisis Multivariate Dengan Program IBM SPSS 23 (Edisi 8)*. Semarang: Badan Penerbit Universitas Diponegoro.
- Ghozali, I. (2013). *Aplikasi Analisis Multivariate dengan Program IBM SPSS 21 Update PLS Regresi Edisi 7 Plus CD*. Semarang: Universitas Diponegoro.
- Gordon. (2009). Enterprise Risk Management and Firm Performance: A Contingency Perspective. *Journal of Accounting and Public Policy*, 28(4): 301-327.
- Greene. (2007). *Econometric Analysis (6th ed)*. New Jersey: Prentice Hall International.
- Gujarati, D. N. (2015). *Dasar-Dasar Ekonometrika Edisi 5 Buku 2*. Jakarta: Salemba Empat.
- Hamada, & Jwailes. (2021). The Effect Of Audit Committee Characteristics Committee Size , Committee Independence , Committee Gender Diversity ,Committee Frequency Of Meetings On Jordanian Firm Performance TQ. *JRDO - Journal of Business Management*, 7(10), 10-24.
- Hammami, & Zadeh. (2020). Audit quality, Media Coverage, Environmental, Social, and Governance Disclosure and Firm Investment Efficiency: Evidence from Canada. *International Journal of Accounting & Information Management*. 28(1): 45-72.
- Harmono. (2014). *Manajemen Keuangan Berbasis Balanced Scorecard. Cetakan Kedua*. Jakarta: Bumi Aksara.

- Harymawan. (2021). Risk Management Committee, Auditor Choice and Audit Fees. *Department of Accounting, Faculty of Economic and Business, Universitas Airlangga, Surabaya 60115*. 9(9), 1-16.
- Hodge. (2009). Assurance of Sustainability Reports: Impact on Report Users' Confidence and Perceptions of Information Credibility. *Department of Accounting, Economics and Finance, Deakin University*. 2(3), 178-194.
- Hoyt, & Liebenberg. (2011). The Value of Enterprise Risk Management. *The Journal of Risk and Insurance, 2011*. 78(4), 795-822.
- Hsu, & Petchsakulwong. (2010). The Impact of Corporate Governance on the Efficiency Performance of the Thai NonLife Insurance Industry. *Geneva Papers on Risk and Insurance - Issues and Practice Published by Palgrave Macmillan*. 35(1), 28-49.
- Hua. (2016). Malaysia Financial Reporting Practices and Audit Quality Promote Financial Success: The Case of Malaysian Construction Sector. *UNIMAS Review of Accounting and Finance, 1(1)*, 36-50.
- Huguet, & Gandía. (2016). Audit and Earnings Management in Spanish SMEs. *BRQ Business Research Quarterly, 19(3)*, 171-187.
- Husna, & Satria. (2019). Effects of Return on Asset, Debt to Asset Ratio, Current Ratio, Firm Size, and Dividend Payout Ratio on Firm Value. *International Journal of Economic and Financial Issues*. 9(5), 50-54.
- Husnaini, & Basuki. (2020). ASEAN Corporate Governance Scorecard: Sustainability Reporting and Firm Value. *Journal of Asian Finance, Economics and Business, 7(11)*, 315–326.

- Hussainey, & Al-Najjar. (2009). The Association between Dividend Payout and Outside Directorships. *Journal of Applied Accounting Research*, 10(1), 4-19.
- Irandoost. (2013). The Effect of Dividend Policy on Stock Price Volatility and Investment Decisions. *Journal of Natural and Social Sciences*, 2(3): 51-59.
- Iswajuni. (2018). The Effect of Enterprise Risk Management (ERM) on Firm Value in Manufacturing Companies listed on Indonesian Stock Exchange year 2010-2013. *Asian Journal of Accounting Research*, 3(2), 224 -235.
- Janor, & Hamid. (2013). The Implementation of Enterprise Risk Management (ERM) and Firm Performance: Evidence from Malaysian Technology Firms. *Jurnal Pengurusan*, 14(9), 3-11.
- Jensen, & Meckling. (1976). Theory of the firm: Managerial Behavior, Agency Costs and Ownership Structure. *Journal of Financial Economics*, 3(4), 305-360.
- Jo, H., & Harjoto. (2011). Corporate Governance and Firm Value : The Impact of Corporate Social Responsibility. *Journal of Business Ethics*, 103(3), 351–383.
- Johl, et al. (2016). Business Group Affiliation, Board Quality and Audit Pricing Behavior: Evidence from Indian Companies. *International Journal of Auditing*, 20(2), 133-148.
- Judge, G. G. (1980). *The Theory and Practice of Econometrics. Second Edition*. New York: John Wiley and Sons. Inc.

- Juniati. (2022). The Evolution of Sustainability Reporting Practices in Indonesia. *Journal of Cleaner Production*, 35(8), 1-14.
- Kajuter, & Harri. (2005). Open-book Accounting in Networks. Potential Achievement and Reasons for Failures. *Management Accounting Research*, 16(2):179–204.
- Kanakriyah. (2020). Dividend Policy and Companies' Financial Performance. *Journal of Asian Finance Economics and Business*, 7(10), 531-541.
- Karamanou, & Vafeas. (2005). The Association Between Corporate Boards, Audit Committees, and Management Earnings Forecasts: An Empirical Analysis. *Journal of Accounting Research*, 43(3):453-486.
- Khanna, & Sonti. (2004). Value Creating Stock Manipulation: Feedback Effect of Stock Prices on Firm Value. *Journal of Financial Markets*, 7(3), 237–270.
- Klein. (2002). Audit Committee, Board of Director Characteristics, and Earnings Management. *Journal of Accounting and Economics*, 33(3), 375-400.
- Kyere, & Ausloos. (2019). Corporate Governance and Firms Financial Performance in the United Kingdom. *Department of Statistics and Econometrics*, Bucharest University of Economic Studies, Bucharest, Romania. 26(2), 1871-1885.
- Laskar, & Maji. (2018). Disclosure of Corporate Sustainability Performance and Firm Performance in Asia. *Asian Review of Accounting*, 26(4), 414-443.
- Li, J. M. (2012). The Effect of Audit Committee Characteristics on Intellectual Capital Disclosure. *The British Accounting Review*, 44(2), 98–110.

- Lin. (2012). Enterprise Risk Management: Strategic Antecedents, Risk Integration, and Performance. *North American Actuarial Journal*, 16(1): 1-28.
- Lindenberg, & Ross. (1981). Tobin's Q Ratio and Industrial Organization. *The Journal of Business*, 54(1), 1-32.
- Linh, & Dang. (2022). Relationship between Sustainability Reporting and Firm's Value: Evidence from Vietnam. *Accounting Corporate Governance & Business Ethics*, 9(1) : 1-20.
- Marsat, S., & Williams, B. (2014). Does the Market Value Social Pillar? *SSRN Electronic Journal*, (January), 1–21.
- Martínez, & Sánchez. (2017). Sustainability Assurance and Cost of Capital: Does Assurance Impact on Credibility of Corporate Social Responsibility Information? *Business Ethics, the Environment & Responsibility*. 26(3), 223-239.
- Mathiessen, H. (2004). Empirical Studies on Ownership Structure and Performance. *Journal of Tourism Economics and Policy*, 3(3), 227-243.
- McShane, & etal. (2011). Hard Choices: Making Trade-offs between Biodiversity Conservation and Human Well-being. *Biological Conservation*, 144(3):966-972.
- Melitz, & Ottaviano. (2008). Market Size, Trade, and Productivity. *The Review of Economic Studies*, 75(1), 295-316.
- Michelon. (2011). Sustainability Disclosure and Reputation: A Comparative Study . *Department of Economics and Management, University of Padova*, 14(2): 79-96.

- Miko, & Kamardin. (2015). Impact of Audit Committee and Audit Quality on Preventing Earnings Management in the Pre- and Post- Nigerian Corporate Governance Code 2011. *Procedia - Social and Behavioral Sciences* 172:651-657.
- Mishra, & Suar. (2010). Does Corporate Social Responsibility Influence Firm Performance of Indian Companies? *Journal of Business Ethics*, 95(4), 571-601.
- Mitnick, B. M. (2015). Agency Theory. In *Wiley Encyclopedia of Management* (pp. 1–6). John Wiley & Sons, Ltd.
- Moeller. (2009). *Brink's Modern Internal Auditing: A Common Body of Knowledge: 8th Edition*. New Jersey: John Wiley & Sons.
- Mohd Saleh, N. M. (2007). Audit Committee Characteristics and Earnings Management: Evidence from Malaysia. *Asian Review of Accounting*, 15(2), 147-163.
- Nawaningsih. (2021). *Program Kerja dan Proyeksi Ditjen Ikft Tahun 2021*. Retrieved October, 17, 2022, from Kementerian Perindustrian Republik Indonesia: <https://ikft.kemenperin.go.id/ikft-4/>
- Nurleni, & Bandang. (2018). The Effect of Managerial and Institutional Ownership on Corporate Social Responsibility Disclosure. *International Journal of Law and Management*, 60(4):979-987.
- Orlitzky, & Benjamin. (2001). Corporate Social Performance and Firm Risk: A Meta-Analytic Review. *Business & Society*, 40(4):369-396.

- Paape, & Speklé. (2012). The Adoption and Design of Enterprise Risk Management Practices: An Empirical Study. *European Accounting Review*, 21(3), 533-564.
- Pearce, & Zahra. (1992). Board Composition From a Strategic Contingency Perspective. *Journal of Management Studies*, 29(4): 411- 438.
- Perrini, & Tencati. (2006). Sustainability and Stakeholder Management: The Need for New Corporate Performance Evaluation and Reporting Systems. *Business Strategy and the Environment*, 15(5): 296 - 308.
- Persons. (2009). Audit Committee Characteristics and Earlier Voluntary Ethics Disclosure Among Fraud and Non-fraud Firms. *International Journal of Disclosure and Governance*, 6(4), 284-297.
- Phan. (2020). The Effect of Enterprise Risk Management on Firm Value: Evidence from Vietnam Industry listed Enterprises. *Publishers of Distinguished Academic Scientific and Professional Journals*, 6(4), 473–480.
- Prasetyorini. (2013). Pengaruh Ukuran Perusahaan, Leverage, Price Earning Ratio dan Profitabilitas terhadap Nilai Perusahaan. *Jurnal Ilmu Manajemen*. 5(7), 4394 - 4422.
- Ross. (2007). *Pengantar Keuangan Perusahaan, 8th ed.* Jakarta: Salemba Empat.
- Ross, & Stephen A. (1973). The Economic Theory of Agency: The Principal's Problem. *American Economic Review*. 63(2), 134–139.
- Saibaba, & Ansari. (2011). A Study of CEO Duality, Audit Committees and Corporate Governance in Companies listed in BSE 200 Index. *The IUP Journal of Corporate Governance*. 10(3), 44-51.

- Sanjaya, & Linawati. (2015). Pengaruh Penerapan Enterprise Risk Management dan Variabel Kontrol Terhadap Nilai Perusahaan di Sektor Keuangan. *Jurnal FINESTA*, 3(1), 52-57.
- Schooley, & Barney. (1994). Using Dividend Policy and Managerial Ownership to Reduce Agency Costs. *The Journal of Financial Research*. 17(13), 363-373.
- Schroeck. (2002). Risk Management and Value Creation in Financial Institutions. *Modern Economy*, 7(4), 237-252.
- Shaheen, & Sadia. (2012). The Impact of Capital Intensity, Size of Firm and Profitability on Debt Financing in Textile Industry of Pakistan. *Interdisciplinary Journal of Contemporary Research in Business*, 3(1):1061-1066.
- Soliman. (2013). Firm Characteristics and the Extent of Voluntary Disclosure: The Case of Egypt. *Research Journal of Finance and Accounting*, 3(4), 71-80.
- Spence. (2002). Signaling in Retrospect and the Informational Structure of Markets. *American Economic Review* 92(3):434-459.
- Sugiyono. (2010). *Metode Penelitian Kuantitatif Kualitatif dan R&D*. Bandung: Alfabeta.
- Sugiyono. (2018). *Metode Penelitian Kuantitatif Kualitatif Dan R&D*. 2nd ed. edited by Sutopo. Yogyakarta: ALFABETA, cv.
- Sujoko, & Soebiantoro. (2007). Pengaruh Struktur Kepemilikan Saham, Leverage, Faktor Interen dan Faktor Ekstern terhadap Nilai Perusahaan. *Jurnal Manajemen dan Kewirausahaan*. 9(1), 41-48.

- Sulong, & Nor. (2008). Dividends, Ownership Structure and Board Governance on Firm Value: Empirical Evidence from Malaysian listed Firms. *Management and Accounting Review*, 6(2), 135-161.
- Susanto, H. (2021). The Impacts of Earnings Volatility, Net Income and Comprehensive Income on Share Price: Evidence from Indonesia Stock Exchange. *International Journal of Economics, Business and Accounting Research*, 7(5), 1009–1016.
- Sutami. (2011). The Effect of Voluntary Disclosure of Environmental Performance and Level of Externalities to Corporate Economic Performance. *The 3rd International Conference on Humanities and Social Sciences*. Faculty of Liberal Arts, Prince of Songkla University: April 2, 2011, 4(1):29-47.
- Suwarno, A. (2021). Indonesian Desirous Finality of the Community in Regard. *Journal of Legal, Ethical and Regulatory Issues*, 24(Special Is), 1–10.
- Tahir, & Razali. (2011). The Relationship Between Enterprise Risk Management and Firm Value: Evidence from Malaysian Public Listed Companies. *International Journal of Economics and Management Sciences*, 1(2), 32-41.
- Timothy, & Ochuodho. (2012). The Relationship Between Dividend Payout and Firm Performance: A Study of Listed Companies in Kenya. *European Scientific Journal, ESJ*, 8(9).
- Vicknair. (1993). The Effect of Board Characteristics and Audit Committee Characteristics on Audit Quality. *Management Science Letters*, 9(2):271-282.

- Wirawan, Anan. (2020). The Effect of Corporate Social Responsibility on the Firm Value with Risk Management as a Moderating Variable. *Journal of Asia-Pacific Business*, 21(2), 143-160.
- Wang Yu, T. L. (2017). Sustainability Reporting and Firm Value: Evidence from Singapore-Listed Companies. *Media Riset Akuntansi, Auditing & Informasi*, 9(11), 1-12.
- Weihong & Wallace. (2004). Market Reaction to Voluntary Announcements of Audit Committee Appointments: The Effect of Financial Expertise. *Journal of Accounting and Public Policy*, 23(4):279-293.
- Widjaya, & Sugiarti. (2013). Penerapan Risk Management Untuk Meningkatkan Non-Financial Firm Performance di Perusahaan Murni Jaya. *Jurnal Ilmiah Mahasiswa Universitas Surabaya*, 2(1), 1-18.
- Yousaf. (2019). Effect of Family Control on Corporate Dividend Policy of Firms in Pakistan. *Financial Innovation*, 5(42): 1-13.
- Yuhertiana. (2019). The Moderating Effect of Organizational Changes on the Influence of Ethical Decision Making on Public Sector Internal Auditor Performance. *Contemporary Economics*, 13(4), 480–493.
- Zorio & Maria. (2013). Sustainability Development and the Quality of Assurance Reports: Empirical Evidence. *Business Strategy and the Environment*, 22(7), 484-500.

APPENDIX

SAMPLE

No.	Code	Name of Company
1	ALKA	PT Alakasa Industrindo Tbk
2	ALDO	PT Alkindo Naratama Tbk
3	AGII	PT Samator Indo Gas Tbk
4	AKPI	PT Argha Karya Prima Industry Tbk
5	ARNA	PT Arwana Citramulia Tbk
6	AMFG	PT Asahimas Flat Glass Tbk
7	MYTX	PT Asia Pasific Investama Tbk
8	BRNA	PT Berlina Tbk
9	BTON	PT Betonjaya Manunggal Tbk
10	CPRO	PT Central Proteina Prima Tbk
11	IGAR	PT Champion Pacific Indonesia
12	CPIN	PT Charoen Pokphand Indonesia Tbk
13	DVLA	PT Darya-Varia Laboratoria Tbk
14	DPNS	PT Duta Pertiwi Nusantara Tbk
15	EKAD	PT Ekadharma International Tbk
16	MDKI	PT Emdeki Utama Tbk
17	ETWA	PT Eterindo Wahanatama Tbk
18	FASW	PT Fajar Surya Wisesa Tbk
19	GDST	PT Gunawan Dianjaya Steel Tbk
20	IMPC	PT Impack Pratama Industri Tbk
21	INAI	PT Indal Aluminium Industry Tbk
22	SRSN	PT Indo Acidatama Tbk
23	INAF	PT Indofarma Tbk
24	SIDO	PT Industri Jamu Dan Farmasi Sido Muncul Tbk.
25	INCI	PT Intanwijaya Internasional Tbk
26	JPFA	PT Japfa Comfeed Indonesia Tbk
27	KLBF	PT Kalbe Farma.Tbk
28	KDSI	PT Kedawung Setia Industrial Tbk
29	KIAS	PT Keramik Indonesia Assosiasi Tbk
30	KAEF	PT Kimia Farma Tbk

RESULT OUTPUT EVIEWS

DESCRIPTIVE STATISTICS

	FV	ERM	SR	ROA	FZ	DVD	MO	Big4	AC
Mean	1.75469	4.08667	0.25223	0.04040	28.4365	1.92523	0.14865	0.38667	3.03333
Median	1.08850	4.00000	0.21978	0.04000	28.1669	0.53704	0.01686	0.00000	3.00000
Maximum	14.6226	6.00000	0.51648	0.34000	32.9273	17.8571	2.18261	1.00000	4.00000
Minimum	0.13076	2.00000	0.12088	-0.40000	25.9355	0.00000	0.00000	0.00000	2.00000
Std. Dev.	1.93971	0.81047	0.09079	0.09160	1.32324	3.34104	0.33905	0.48862	0.21415
Observations	150	150	150	150	150	150	150	150	150

COMMON EFFECT MODEL

Variable	Coefficient	Std. Error	t-Statistic	Prob.
C	-2.091628	3.987864	-0.524498	0.6007
ERM	0.865717	0.222452	3.891704	0.0002
SR	6.135667	2.014475	3.045789	0.0028
ROA	3.196265	1.934550	1.652201	0.1007
FZ	-0.046395	0.141654	-0.327526	0.7437
DVD	0.069922	0.054522	1.282456	0.2018
MO	-0.669695	0.526968	-1.270847	0.2058

FIXED EFFECT MODEL

Variable	Coefficient	Std. Error	t-Statistic	Prob.
C	24.78710	11.19722	2.213683	0.0288
ERM	0.014778	0.760928	0.019421	0.9845
SR	0.978316	1.253513	0.780459	0.4367
ROA	0.778016	1.285267	0.605334	0.5462
FZ	-0.819041	0.384529	-2.129984	0.0353
DVD	0.001738	0.063823	0.027234	0.9783
MO	0.002591	0.503196	0.005149	0.9959

RANDOM EFFECT MODEL

Variable	Coefficient	Std. Error	t-Statistic	Prob.
C	3.352162	6.329786	0.529585	0.5972
ERM	0.738186	0.386650	1.909183	0.0582
SR	0.860983	1.206459	0.713645	0.4766
ROA	1.281257	1.244663	1.029401	0.3050
FZ	-0.168976	0.222981	-0.757807	0.4498
DVD	0.021859	0.055914	0.390928	0.6964
MO	-0.242413	0.463407	-0.523110	0.6017

CHOW TEST

Effects Test	Statistic	d.f.	Prob.
Cross-section F	18.914353	(29,114)	0.2876
Cross-section Chi-square	263.976990	29	0.2386

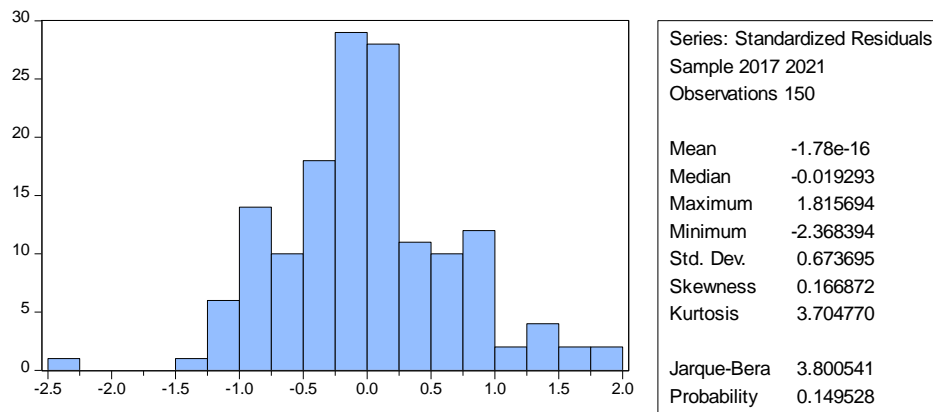
HAUSMAN TEST

Test Summary	Chi-Sq. Statistic	Chi-Sq. d.f.	Prob.
Cross-section random	12.313278	6	0.0553

LAGRANGE MULTIPLIER TEST

	Test Hypothesis		
	Cross-section	Time	Both
Breusch-Pagan	151.0854 (0.1674)	0.511207 (0.4746)	151.5966 (0.2099)
Honda	12.29168 (0.0748)	0.714988 (0.2373)	9.197102 (0.8950)
King-Wu	12.29168 (0.3153)	0.714988 (0.2373)	4.949669 (0.8950)
Standardized Honda	13.75121 (0.5903)	1.338221 (0.0904)	6.587005 (0.9353)
Standardized King-Wu	13.75121 (0.2710)	1.338221 (0.0904)	3.019489 (0.9811)
Gourieroux, et al.	--	--	151.5966 (0.0023)

NORMALITY TEST



MULTICOLLINEARITY TEST

	ERM	SR	ROA	FZ	DVD	MO
ERM	1	0.341504976802 341	- 0.033226162782 45145	0.3892684158541 633	- 0.19842151123 03496	- 0.20077710096 39183
SR	0.34150497680234 1	1	0.163880487274 0245	0.3518408463930 668	- 0.09343127683 064305	- 0.19250053241 40714
ROA	- 0.03322616278245 145	0.163880487274 0245	1	0.1316609118660 048	0.29983270693 46509	- 0.02277347406 68654
FZ	0.38926841585416 33	0.351840846393 0668	0.131660911866 0048	1	- 0.06116582659 950848	- 0.37831585321 85344
DVD	- 0.19842151123034 96	- 0.093431276830 64305	0.299832706934 6509	- 0.0611658265995 0848	1	- 0.07782909990 400919
MO	- 0.20077710096391 83	- 0.192500532414 0714	- 0.022773474066 8654	- 0.3783158532185 344	- 0.07782909990 400919	1

HETEROSCEDASTICITY TEST

Variable	Coefficient	Std. Error	t-Statistic	Prob.
C	0.251155	0.978799	0.256595	0.7979
ERM	0.305427	0.096910	3.151655	0.5120
SR	1.092048	0.395037	2.764422	0.4365
ROA	0.444264	0.399334	1.112513	0.2678
FZ	0.039119	0.010513	3.720852	0.1763
DVD	-0.013155	0.034547	-0.380785	0.7039
MO	0.170137	0.104622	1.626203	0.1061
BIG4	0.171747	0.086172	1.993083	0.2482
AC	0.036213	0.156748	0.231025	0.8176

AUTOCORRELATION TEST

R-squared	0.230246	Mean dependent var	1.838933
Adjusted R-squared	0.197948	S.D. dependent var	2.227549
S.E. of regression	2.089928	Akaike info criterion	4.357679
Sum squared resid	624.5956	Schwarz criterion	4.498176
Log likelihood	-319.8260	Hannan-Quinn criter.	4.414759
F-statistic	4.378194	Durbin-Watson stat	1.914175
Prob(F-statistic)	0.000432		

T-TEST, F-TEST, R² TEST

Variable	Coefficient	Std. Error	t-Statistic	Prob.
C	-2.091628	3.987864	-0.524498	0.6007
ERM	0.865717	0.222452	3.891704	0.0002
SR	6.135667	2.014475	3.045789	0.0028
ROA	3.196265	1.934550	1.652201	0.1007
FZ	-0.046395	0.141654	-0.327526	0.7437
DVD	0.069922	0.054522	1.282456	0.2018
MO	-0.669695	0.526968	-1.270847	0.2058
R-squared	0.230246	Mean dependent var	1.838933	
Adjusted R-squared	0.197948	S.D. dependent var	2.227549	
S.E. of regression	2.089928	Akaike info criterion	4.357679	
Sum squared resid	624.5956	Schwarz criterion	4.498176	
Log likelihood	-319.8260	Hannan-Quinn criter.	4.414759	
F-statistic	4.378194	Durbin-Watson stat	1.914175	
Prob(F-statistic)	0.000432			

MULTIPLE REGRESSION ANALYSIS WITH AUDIT QUALITY VARIABLE

Variable	Coefficient	Std. Error	t-Statistic	Prob.
C	8.021786	4.816491	1.665483	0.0981
ERM	10.70130	6.702286	1.596664	0.1126
SR	15.13196	16.95810	0.892315	0.3738
ROA	-8.772301	4.157689	-2.109898	0.0367
FZ	-0.310952	0.172593	-1.801648	0.0738
DVD	0.124619	0.051379	2.425464	0.0166
MO	-0.095699	0.483970	-0.197737	0.8435
ERM_BIG4	-3.365404	0.842477	-3.994655	0.0001
SR_BIG4	-3.847620	3.947913	-0.974596	0.3315
ROA_BIG4	-2.226684	2.197299	-1.013373	0.3127
FZ_BIG4	-2.910246	5.449171	-0.534071	0.5942
DVD_BIG4	13.54933	4.487526	3.019332	0.0030
MO_BIG4	0.060403	0.034999	1.725864	0.0866
R-squared	0.404571	Mean dependent var		1.838933
Adjusted R-squared	0.352416	S.D. dependent var		2.227549
S.E. of regression	1.792566	Akaike info criterion		4.087852
Sum squared resid	440.2211	Schwarz criterion		4.348774
Log likelihood	-293.5889	Hannan-Quinn criter.		4.193856
F-statistic	7.757176	Durbin-Watson stat		0.384588
Prob(F-statistic)	0.000000			

MULTIPLE REGRESSION ANALYSIS WITH AUDIT COMMITTEE VARIABLE

Variable	Coefficient	Std. Error	t-Statistic	Prob.
C	7.955071	4.534810	1.754224	0.0816
ERM	2.514291	0.482788	5.207862	0.0000
SR	6.482647	2.058693	3.148914	0.0020
ROA	3.663452	75.44601	0.048557	0.9613
FZ	-0.083930	0.214397	-0.391469	0.6961
DVD	-4.620012	5.820078	-0.793806	0.4287
MO	26.39985	38.59692	0.683988	0.4951
ERM_AC	0.277950	0.188287	1.476209	0.0422
SR_AC	2.404360	3.079166	0.780848	0.4362
ROA_AC	-0.946395	25.16693	-0.037605	0.9701
FZ_AC	1.553564	1.939788	0.800894	0.0424
DVD_AC	-8.963744	12.84499	-0.697840	0.4865
MO_AC	-0.071727	0.038725	-1.852236	0.0061
R-squared	0.309102	Mean dependent var		1.838933
Adjusted R-squared	0.248585	S.D. dependent var		2.227549
S.E. of regression	1.930932	Akaike info criterion		4.236562
Sum squared resid	510.8044	Schwarz criterion		4.497484
Log likelihood	-304.7421	Hannan-Quinn criter.		4.342566
F-statistic	5.107721	Durbin-Watson stat		0.260890
Prob(F-statistic)	0.000001			

INDICES OF SUSTAINABILITY REPORTING DISCLOSURE

91 Indicators CSR based on GRI G4

ECONOMIC CATEGORIES			
Economic Performance	G4-EC 1	The direct economic value generated and distributed, includes: Revenues, operating expenses, employee wages and benefits, payments to financiers, payments to the government (by State), community investments.	If disclosed it is given a value of 1 and if it is not disclosed it is given a value of 0
	G4-EC 2	Financial implications and other risks and opportunities to the organization's activities due to climate change.	
	G4-EC 3	The scope of organization obligations over the definite reward program.	
	G4-EC 4	Financial assistance received from the government.	
Market Existence	G4-EC 5	The standard wage ratio of entry-level employees by gender compared to the regional minimum wage at operational locations is significant.	If disclosed it is given a value of 1 and if it is not disclosed it is given a value of 0
	G4-EC 6	A significant comparison of senior management employed from local	

		communities at the site of operation.	
Indirect Economic Impact	G4-EC 7	Development and impact of infrastructure and service investments provided for the public benefit commercially, commercially, or free of charge.	If disclosed it is given a value of 1 and if it is not disclosed it is given a value of 0
	G4-EC 8	Significant indirect economic impacts, including how widespread the impact is	
Procurement Practices	G4-EC 9	Comparison of purchases from local suppliers at significant operational locations	If disclosed it is given a value of 1 and if it is not disclosed it is given a value of 0

ENVIRONMENTAL CATEGORIES			
Material	G4-EN 1	Materials used by weight or volume	If disclosed it is given a value of 1 and if it is not disclosed it is given a value of 0
	G4-EN 2	Percentage of materials used that are recycled input materials	
Energy	G4-EN 3	Direct energy use from primary energy resources.	If disclosed it is given a value of 1 and if it is not disclosed it is given a value of 0
	G4-EN 4	Indirect energy use based on primary sources.	
	G4-EN 5	Estimates to obtain energy-efficient or renewable energy-based products and services, as well as a reduction in the	

		average energy needs as a result of these initiatives.	
	G4-EN 6	Reduction of energy consumption.	
	G4-EN 7	Reduction of energy needs in products and services.	
Water	G4-EN 8	Total water intake by source	If disclosed it is given a value of 1 and if it is not disclosed it is given a value of 0
	G4-EN 9	Water sources that are significantly affected as a result of water intake.	
	G4-EN 10	Percentage and total volume of recycled and reused water	
Biodiversity	G4-EN 11	Operational locations owned, leased, managed within or adjacent to protected areas and areas with high biodiversity value outside the protected areas.	If disclosed it is given a value of 1 and if it is not disclosed it is given a value of 0
	G4-EN 12	Description of the significant impacts caused by activities, products and services on biodiversity in protected areas and in areas that have high-value biodiversity outside of protected areas.	
	G4-EN 13	Protected and restored habitat.	
	G4-EN 14	The number of species based on the level of extinction ratio that is on the	

		IUCN red list (IUCN red list) and that is on the national conservation list with habitats in areas affected by the operation.	
Emission	G4-EN 15	The amount of direct or indirect greenhouse gas emissions is broken down by weight.	If disclosed it is given a value of 1 and if it is not disclosed it is given a value of 0
	G4-EN 16	Indirect energy greenhouse gas emissions are broken down by weight.	
	G4-EN 17	Other indirect greenhouse gas emissions are broken down by weight.	
	G4-EN 18	The intensity of greenhouse gas emissions.	
	G4-EN 19	Initiatives to reduce greenhouse gas emissions and their achievements.	
	G4-EN 20	Emissions of ozone-depleting chemicals are broken down by weight.	
	G4-EN 21	NOx, Sox and other significant air emissions are broken down by type and weight.	
Effluent and Waste	G4-EN 22	Total water discharged by quality and purpose.	If disclosed it is given a value of 1 and if it is not disclosed it is given a
	G4-EN 23	The total weight of waste by type and	

		method of disposal.	value of 0
	G4-EN 24	Significant total number and volume of spills.	
	G4-EN 25	The weight of waste considered hazardous under the provisions of the basel conventionS I, II, III, and VIII that is transported, imported, or managed and the percentage of waste transported for international shipments.	
	G4-EN 26	The identity, size, protection status and biodiversity value of water bodies and related habitats that are significantly affected by wastewater and runoff from the organization.	
Products and Services	G4-EN 27	Initiatives to reduce the environmental impact of products and services and the extent of the impact of such unemployment	If disclosed it is given a value of 1 and if it is not disclosed it is given a value of 0
	G4-EN 28	Percentage of products sold and their packaging materials drawn by category	
Compliance	G4-EN 29	The monetary value of the fine is significant and the	If disclosed it is given a value of 1 and if it is not

		total amount of non-fungal sanctions for non-compliance with environmental laws and regulations.	disclosed it is given a value of 0
Transportation	G4-EN 30	Significant environmental impact due to the transfer of products and other goods and materials used for the operation of the enterprise, and labor.	If disclosed it is given a value of 1 and if it is not disclosed it is given a value of 0
Other	G4-EN 31	Total environmental protection expenditure based on; waste disposal, emission treatment, and remediation costs. The cost of prevention and environmental management	If disclosed it is given a value of 1 and if it is not disclosed it is given a value of 0
Supplier Assessment of the Environment	G4-EN 32	The percentage of screening of new suppliers using environmental criteria.	If disclosed it is given a value of 1 and if it is not disclosed it is given a value of 0
	G4-EN 33	Actual and potential significant negative environmental impacts in the supply chain and the actions taken.	
Environmental Complaints Mechanism	G4-EN 34	The number of complaints about environmental impacts filed, handled, and resolved through official complaint	If disclosed it is given a value of 1 and if it is not disclosed it is given a value of 0

		mechanisms during the reporting period.	
--	--	---	--

SOCIAL CATEGORIES			
SUB-CATEGORY : EMPLOYMENT PRACTICES AND COMFORT OF WORK			
Personnel	G4-LA 1	Total number and rate of new employee recruitment and employee turnover by age group, gender, and region.	If disclosed it is given a value of 1 and if it is not disclosed it is given a value of 0
	G4-LA 2	Benefits provided for full-time employees that are not provided to temporary or part-time employees, based on significant operating locations. This includes, at least: life insurance, health insurance, disability and disability protection, maternity leave, pension granting, shareholding	
	G4-LA 3	Return to work rates and retention rates after maternity leave, according to gender.	
Industrial Relations	G4-LA 4	The minimum period of notice of changes to elected employees and representatives prior to the application of significant operational changes that affect them	If disclosed it is given a value of 1 and if it is not disclosed it is given a value of 0

		substantially, including whether they are contained in the collective agreement	
Occupational Health and Safety	G4-LA 5	The percentage of the total workforce represented in the formal joint committee of worker management that helps supervise and advise occupational health and safety programs	If disclosed it is given a value of 1 and if it is not disclosed it is given a value of 0
	G4-LA 6	The type and extent of injuries, occupational diseases, lost days, and infertility, as well as the total number of occupational deaths, by region and gender	
	G4-LA 7	Workers who are frequently exposed to or at high risk of developing diseases associated with their work	
	G4-LA 8	Health and safety topics covered by formal agreements with unions	
Training and Education	G4-LA 9	Average training hours per year per employee by gender, and by employee category	If disclosed it is given a value of 1 and if it is not disclosed it is given a value of 0
	G4-LA 10	A program for skills management and lifelong learning that	

		supports the sustainability of employees' work and helps them manage retirement	
	G4-LA 11	Percentage of employees who receive regular performance and career development reviews, according to employee gender and category	
Diversity and Equality of Opportunity	G4-LA 12	The composition of governance bodies and the division of employees per category of employees by gender, age group, membership of minority groups, and other indicators of diversity.	If disclosed it is given a value of 1 and if it is not disclosed it is given a value of 0
Equality of Remuneration of Women and Men	G4-LA 13	The ratio of basic salary and remuneration for women to men according to employee categories, based on significant operational location.	If disclosed it is given a value of 1 and if it is not disclosed it is given a value of 0
Supplier Assessments related to Employment Practices	G4-LA 14	Percentage of screening of new suppliers using employment practice criteria	If disclosed it is given a value of 1 and if it is not disclosed it is given a value of 0
	G4-LA 15	Significant actual and potential negative impacts on employment practices	

		in the supply chain and actions taken	
Employment Complaints Mechanism	G4-LA 16	The number of complaints about labor practices filed, handled, and resolved through official complaint mechanisms	If disclosed it is given a value of 1 and if it is not disclosed it is given a value of 0

SOCIAL CATEGORIES

SUB-CATEGORY : HUMAN RIGHTS

Investment	G4-HR 1	A significant total and percentage of investment agreements and contracts that include clauses related to human rights or human rights-based screening	If disclosed it is given a value of 1 and if it is not disclosed it is given a value of 0
	G4-HR 2	The amount of time employee training on human rights policies or procedures related to human rights aspects relevant to the operation, including the percentage of employees trained.	
Nondiscrimination	G4-HR 3	Total number of incidents of discrimination and remedial action taken	If disclosed it is given a value of 1 and if it is not disclosed it is given a value of 0
Freedom of Association and Collective Labor Agreement	G4-HR 4	Identified operations and suppliers that may violate or risk violating the right to	If disclosed it is given a value of 1 and if it is not disclosed it is given a

		exercise freedom of association and collective labor agreements, and actions taken to support those rights	value of 0
Child Labor	G4-HR 5	Identified operations and suppliers at high risk of exploitation of child labor and actions taken to contribute to the effective elimination of child labor	If disclosed it is given a value of 1 and if it is not disclosed it is given a value of 0
Forced Laborers or Taxpayers	G4-HR 6	Identified operations and suppliers at high risk of forced or compulsory labor and actions to contribute to the elimination of any form of forced or compulsory labor	If disclosed it is given a value of 1 and if it is not disclosed it is given a value of 0
Safeguarding Practices	G4-HR 7	Percentage of security personnel trained in human rights policies or procedures in organizations relevant to operations	If disclosed it is given a value of 1 and if it is not disclosed it is given a value of 0
Customary Rights	G4-HR 8	Total number of incidents of violations involving the rights of indigenous peoples and actions taken	If disclosed it is given a value of 1 and if it is not disclosed it is given a value of 0
Assessment	G4-HR 9	Total number and percentage of operations that have conducted a human rights impact review or assessment	If disclosed it is given a value of 1 and if it is not disclosed it is given a value of 0

Supplier Assessment of Human Rights	G4-HR 10	Percentage of screening of new suppliers using human rights criteria	If disclosed it is given a value of 1 and if it is not disclosed it is given a value of 0
	G4-HR 11	Significant actual and potential negative impacts on human rights in supply chains and actions taken	
Human Rights Complaints Mechanism	G4-HR 12	The number of complaints about the impact on human rights filed, handled, and resolved through formal grievance mechanisms	If disclosed it is given a value of 1 and if it is not disclosed it is given a value of 0

SOCIAL CATEGORIES			
SUB-CATEGORY : SOCIETY			
Local People	G4-SO 1	Percentage of operations with local community engagement, impact assessment, and development programs implemented	If disclosed it is given a value of 1 and if it is not disclosed it is given a value of 0
	G4-SO 2	Operations with significant actual and potential negative impacts on local communities.	
Anti-Corruption	G4-SO 3	Total number and percentage of operations assessed against risks associated with corruption and identified significant risks	If disclosed it is given a value of 1 and if it is not disclosed it is given a value of 0
	G4-SO 4	Communication and training on anti-corruption	

		policies and procedures	
	G4-SO 5	Proven corruption incidents and taken actions	
Public Policy	G4-SO 6	The total value of political contributions is by country and beneficiaries/beneficiaries .	If disclosed it is given a value of 1 and if it is not disclosed it is given a value of 0
Monopoly Practices and Their Results	G4-SO 7	The total number of legal actions related to anti-competition, anti-trust as well as monopolistic practices and their results.	If disclosed it is given a value of 1 and if it is not disclosed it is given a value of 0
Compliance	G4-SO 8	Significant monetary value of fines and the total amount of non-monetary sanctions for non-compliance with laws and regulations	If disclosed it is given a value of 1 and if it is not disclosed it is given a value of 0
Supplier Assessment of Impact on Society	G4-SO 9	The percentage of screening of new suppliers uses the criterion of impact on society.	If disclosed it is given a value of 1 and if it is not disclosed it is given a value of 0
	G4-SO 10	Significant actual and potential negative impacts on communities in the supply chain and actions taken	
Mechanism for Complaints impact on society	G4-SO 11	The number of complaints about the impact on society are filed, handled, and resolved through official complaint mechanisms	If disclosed it is given a value of 1 and if it is not disclosed it is given a value of 0

SOCIAL CATEGORIES			
SUB-CATEGORY : RESPONSIBILITY FOR THE PRODUCT			
Employee Health and Safety	G4-PR 1	A significant percentage of product and service categories whose impact on health and safety is assessed for improvement	If disclosed it is given a value of 1 and if it is not disclosed it is given a value of 0
	G4-PR 2	Total number of incidents of dissatisfaction with regulations and voluntary codes related to the health and safety impacts of products and services throughout the life cycle, by type of outcome	
Product and Service Labeling	G4-PR 3	The types of product and service information required by the organization's procedures related to information and labeling of products and services, as well as a significant percentage of product and service categories must follow similar information requirements	If disclosed it is given a value of 1 and if it is not disclosed it is given a value of 0
	G4-PR 4	The total number of incidents of non-compliance with regulations and voluntary codes related to information	

		and labeling of products and services, according to the type of results	
	G4-PR 5	Survey results to measure customer satisfaction	
Marketing Communications	G4-PR 6	Prohibited or disputed sale of products	If disclosed it is given a value of 1 and if it is not disclosed it is given a value of 0
	G4-PR 7	Total number of incidents of non-compliance with regulations and voluntary code on marketing communications, including advertising, promotions, and sponsorships by type of result	
Customer Privacy	G4-PR 8	Total number of proven complaints related to customer privacy breaches and loss of customer data	If disclosed it is given a value of 1 and if it is not disclosed it is given a value of 0
Compliance	G4-PR 9	Monetary value of significant fines for non-compliance with laws and regulations related to the provision and use of products and services	If disclosed it is given a value of 1 and if it is not disclosed it is given a value of 0